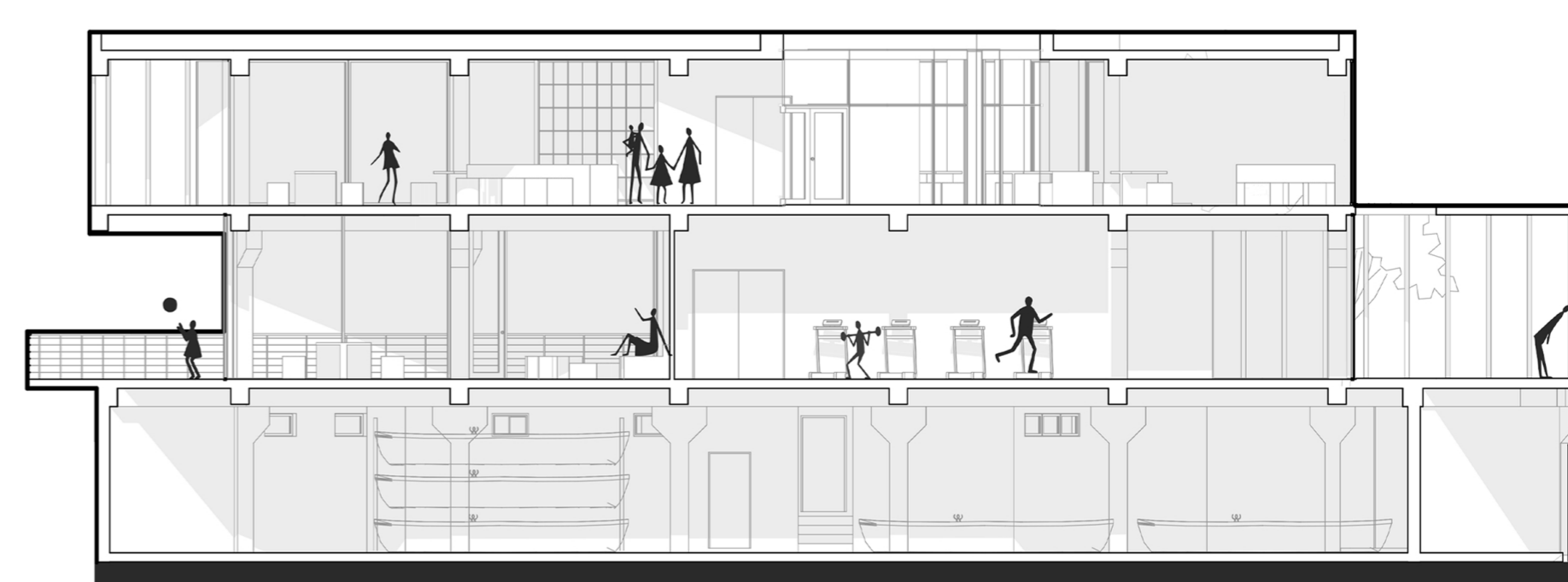
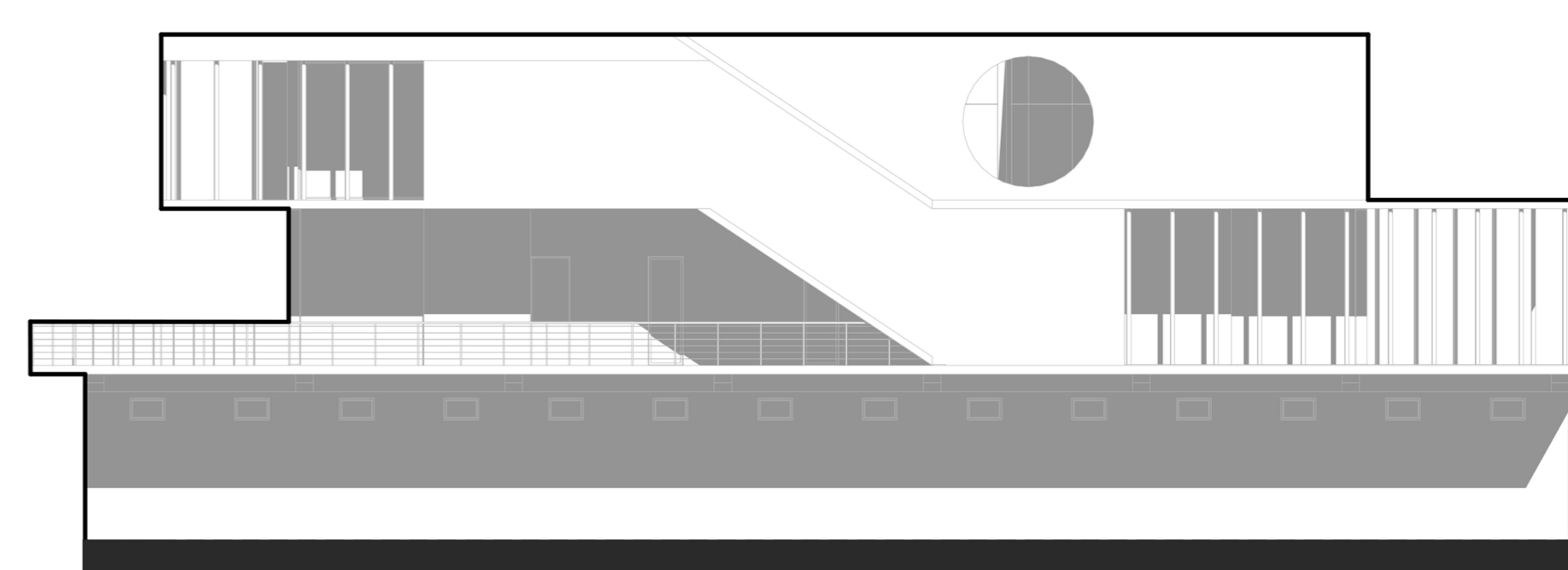


RE-TRUSS BELGRADE

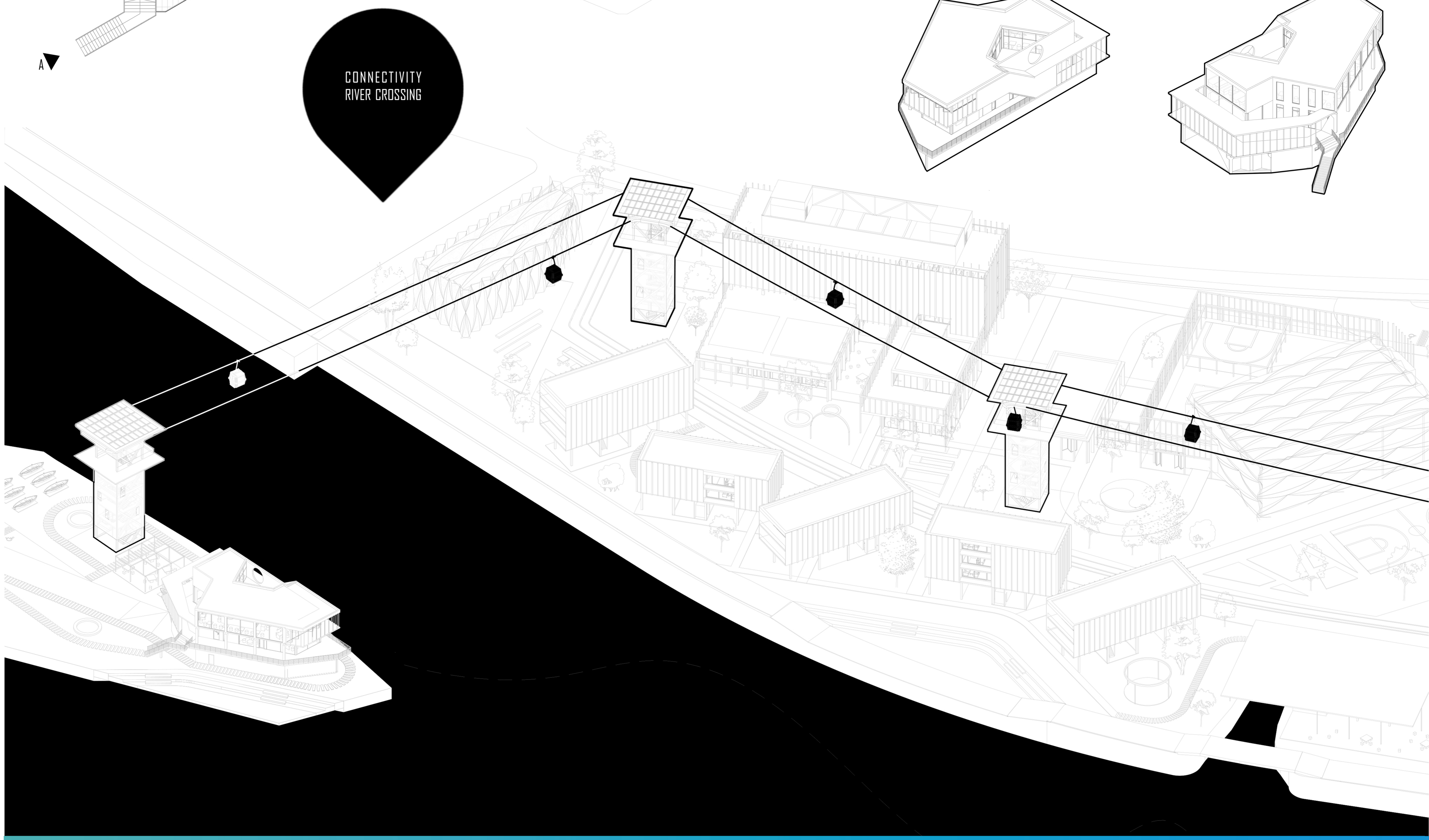
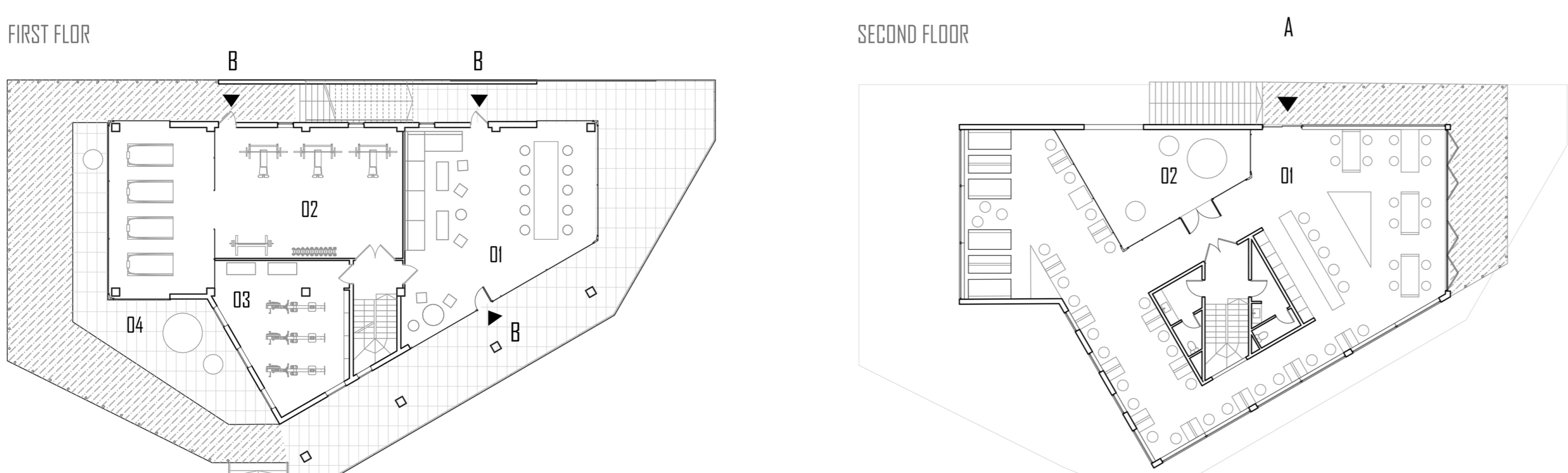
Renovation



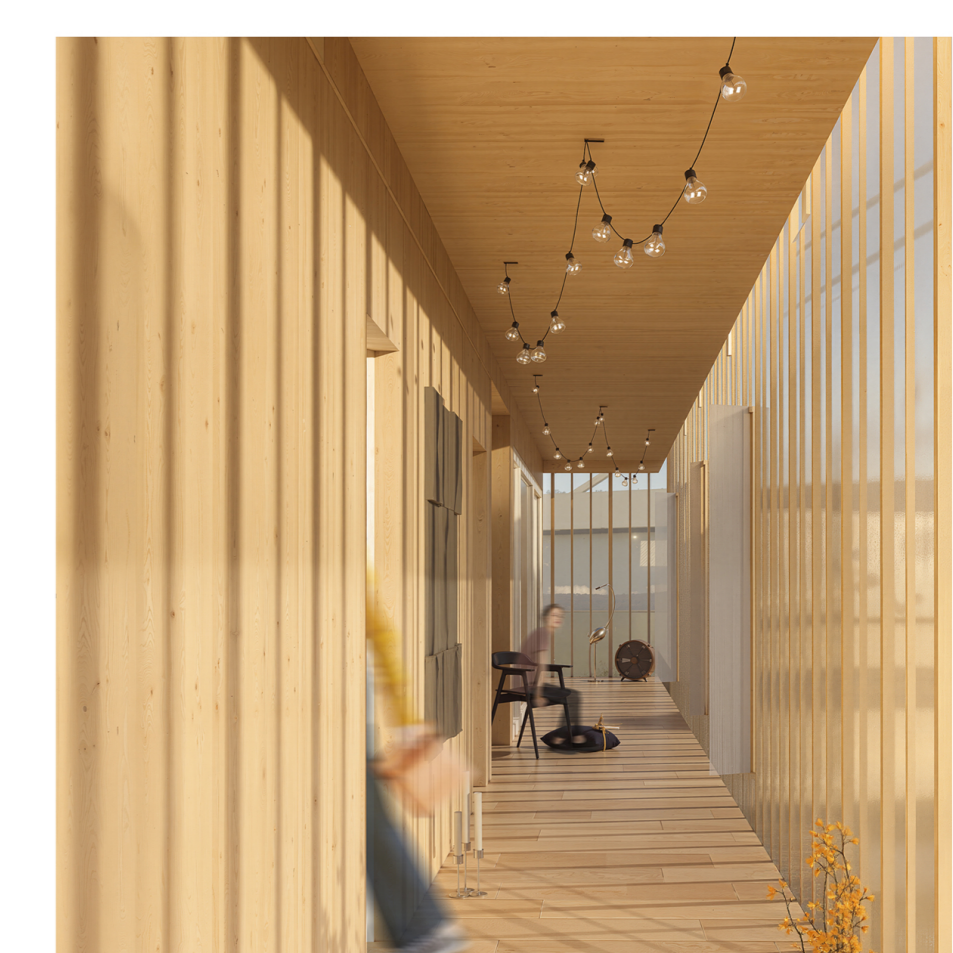
AT THE URBAN DESIGN LEVEL, THE PROPOSAL INCLUDES AN EXHIBITION AREA FOR BOATS, COMPLEMENTED BY SEATING ZONES AND PARKING SPACES. AN AMPHITHEATER ORIENTED TOWARD THE WATER IS ALSO INTRODUCED, ENHANCING THE CONNECTION BETWEEN THE SITE AND ITS WATERFRONT SETTING.



ON THE FIRST FLOOR, A GREEN BUFFER SPACE IS INTRODUCED BETWEEN THE GYM AND THE PUBLIC CIRCULATION AREA, PREVENTING DIRECT INTERACTION BETWEEN THE TWO ZONES. THE SECOND FLOOR IS DESIGNED AS A PUBLIC CAFE, BENEFITING FROM FAVORABLE PANORAMIC VIEWS. A KEY OBJECTIVE OF THE PROJECT WAS TO SEPARATE THE CIRCULATION OF ATHLETES FROM THAT OF VISITORS. TO ACHIEVE THIS, THE EXISTING EXTERNAL STAIRCASE IS DESIGNATED EXCLUSIVELY FOR PUBLIC USE, PROVIDING DIRECT ACCESS TO THE CAFE. ADDITIONALLY, A NEW EXTERNAL STAIRCASE LEADING TO THE SECOND FLOOR REINFORCES THIS SEPARATION, CREATING AN INDEPENDENT CIRCULATION PATH. THE ADDED PORTICO FURTHER HELPS GUIDE VISITORS TOWARD THE CAFE ENTRANCE. THE SECOND FLOOR ALSO FEATURES AN OUTDOOR COURTYARD WITH A CIRCULAR VOID, INSPIRED BY MARITIME THEMES. THIS SPACE OFFERS A DIRECT VISUAL CONNECTION TO ONE OF THE TOWERS WHILE ALSO ALLOWING NATURAL LIGHT TO ENTER.

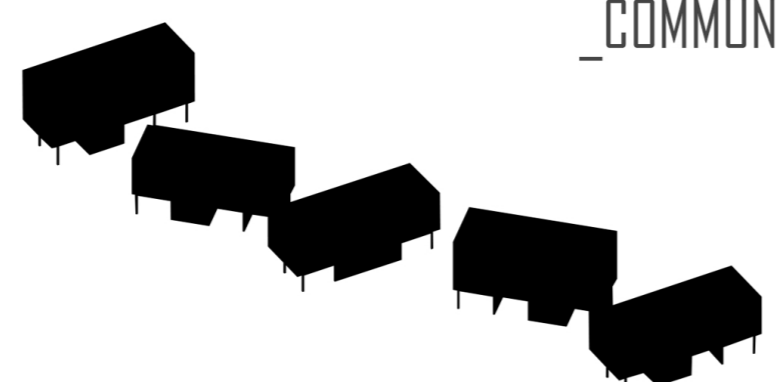


New Construction



THE PROJECT SEEKS TO ENSURE CONNECTIVITY THROUGH BOTH THE ADAPTIVE REUSE OF A SEGMENT OF THE FORMER RAILWAY BRIDGE, GUIDED BY A HERITAGE-CONSCIOUS STRATEGY, AND THE SPACES IT PROPOSES. THE EXISTING RIVERBANK PROMENADE IS EXTENDED INTO THE SITE, WITH THE AIM OF CREATING A WELCOMING ENVIRONMENT THAT FOSTERS INTERACTION AMONG USERS. ADDITIONALLY, THE CONTINUITY OF GREEN SPACE IS PRESERVED ACROSS THE SITE THROUGH THE INCORPORATION OF SUSPENDED ACCOMMODATION BUILDINGS, WHICH ENHANCE ACCESSIBILITY AND MAINTAIN VISUAL CONNECTIONS TO THE SAVA WATERFRONT.

GREEN SPACE CONTINUITY
WATERFRONT ACCESSIBILITY
COMMUNITY



PUBLIC SPACES ARE DISTRIBUTED ACROSS THE ENTIRE SITE, INTEGRATING SPORTS FACILITIES WITH RECREATIONAL AREAS THROUGH A SUSTAINABLE DESIGN APPROACH THAT PROMOTES BOTH ENVIRONMENTAL RESPONSIBILITY AND SOCIAL INTERACTION. THE CONTINUOUS PROMENADE ENCOURAGES USER ENGAGEMENT, ESTABLISHING A SEAMLESS CONNECTION BETWEEN WATER SPORTS AMENITIES, ATHLETIC FACILITIES, AND THE LOCAL COMMUNITY, WHILE ALSO PROVIDING A COHERENT PEDESTRIAN EXPERIENCE ALONG THE WATERFRONT. THE COMPLEX INCORPORATES MIXED-USE ZONES: RESIDENTIAL, PUBLIC, AND RECREATIONAL, SUPPORTING A DYNAMIC AND SELF-SUSTAINING ENVIRONMENT THAT REMAINS ACTIVE THROUGHOUT THE DAY. THESE FUNCTIONS ARE CAREFULLY INTERWOVEN TO PROMOTE AND ENCOURAGE A BALANCED RELATIONSHIP BETWEEN PRIVATE AND COLLECTIVE SPACES, ENHANCING THE OVERALL QUALITY OF THE BUILT ENVIRONMENT. ALL INTERNAL CIRCULATION NETWORKS CONVERGE TOWARD THE WATERFRONT, ENSURING CLEAR ORIENTATION, EASY ACCESS, AND A STRONG VISUAL AND FUNCTIONAL CONNECTION TO THE RIVER. THIS ORGANIZATION REINFORCES THE WATERFRONT AS THE PRIMARY ATTRACTOR OF THE SITE, CREATING AN INCLUSIVE AND WELL-INTEGRATED SPACE THAT SUPPORTS COMMUNITY LIFE AND PUBLIC ENGAGEMENT.

