

project protects local biodiversity and ensures waterfront continuity. It serves as a necessary, sustainable counterpoint to the mineral-heavy developments and aggressive urbanization on the opposite bank.

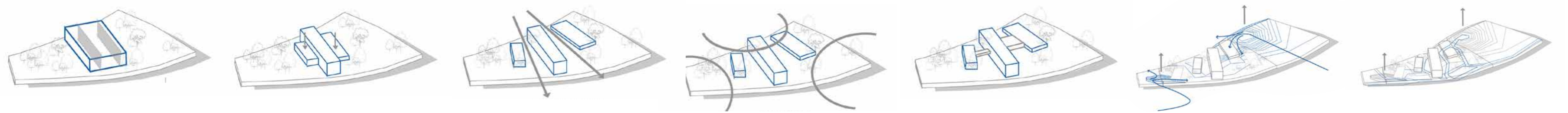
The project proposes a sports ecosystem designed in close synergy with the northern Sava riverbank. Capitalizing on the existing terrain, it preserves and extends the green belt to act as a transition zone between the urban density of New Belgrade and the natural riverine environment.

By maintaining a green buffer zone with minimal built intervention, the

The massing is derived from three major functional components: sports, athlete accommodation, and dining facilities. A flowing path connects volumes at varying elevations, seamlessly integrating training and relaxation areas into nature. More than just a campus, this structure provides a replicable model where movement and the environment unite to shape the city's future.



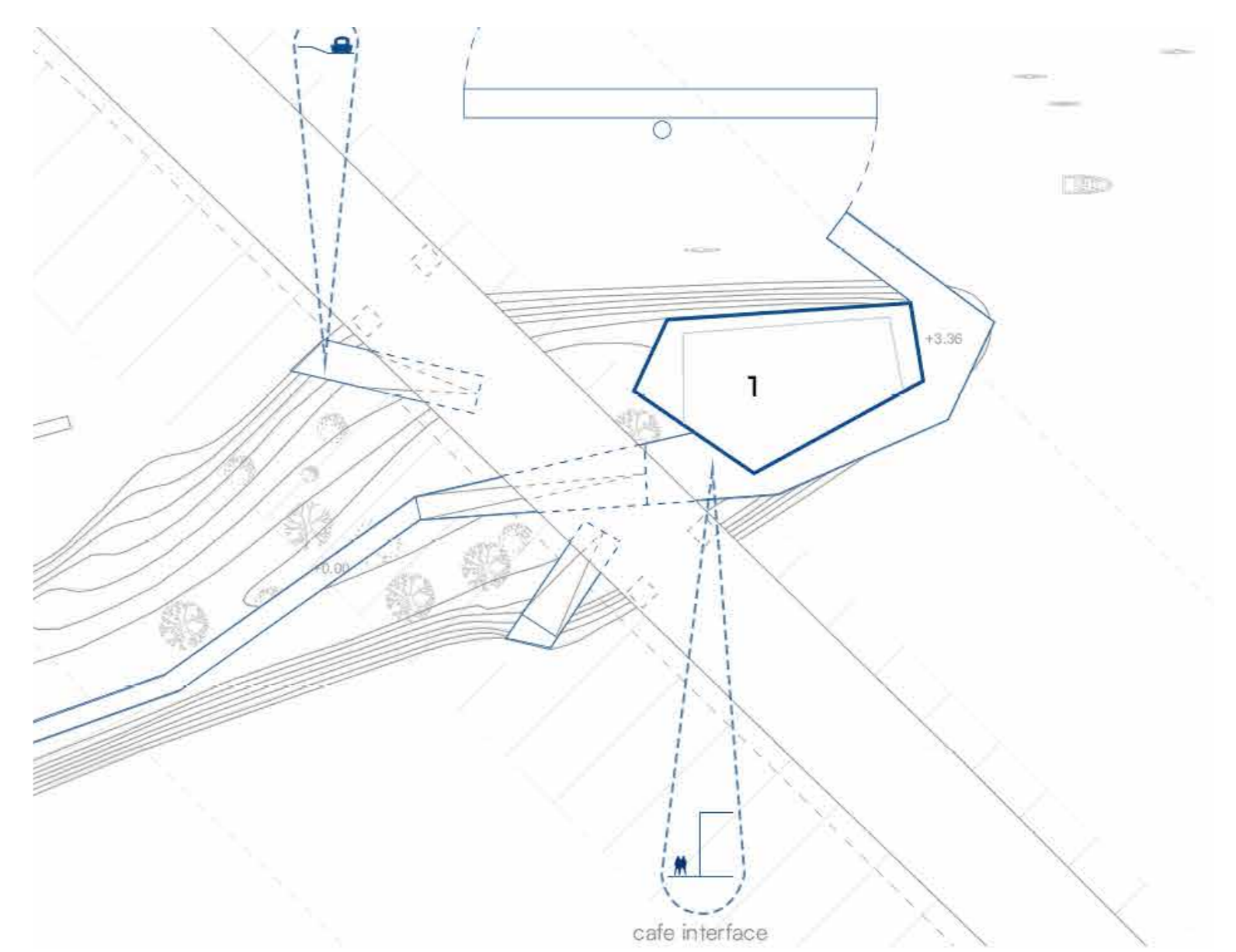
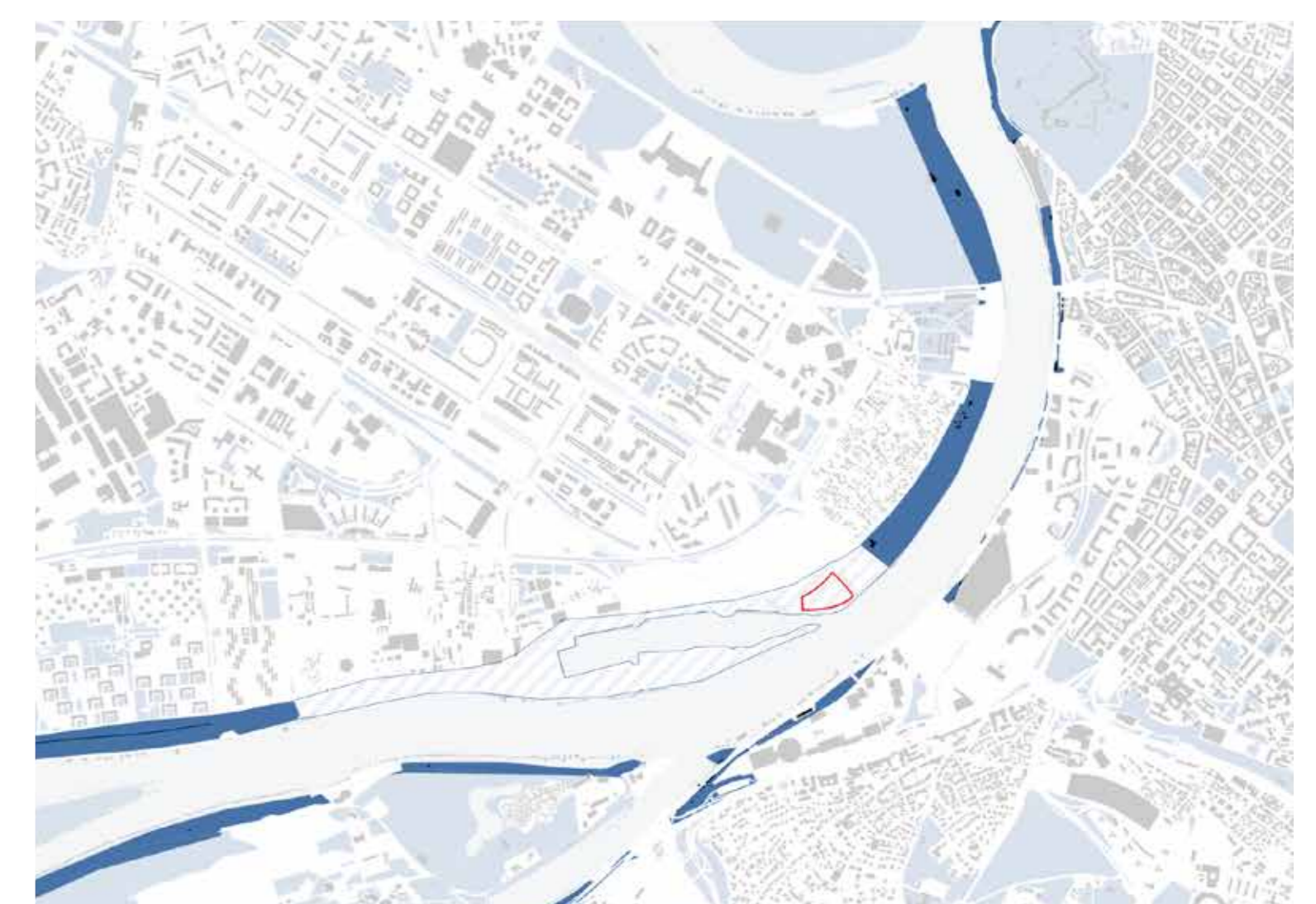
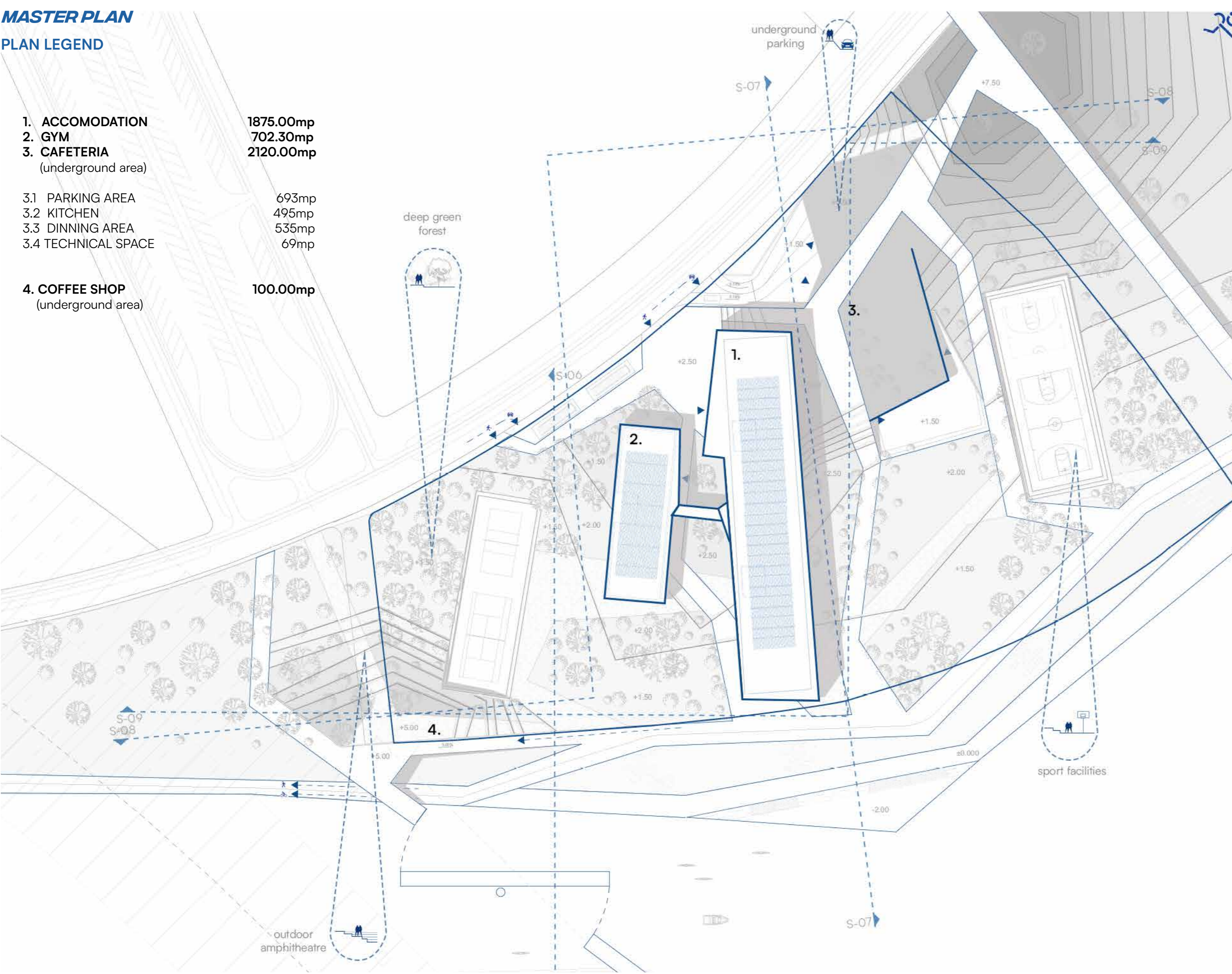
ARCHITECTURAL CONCEPT



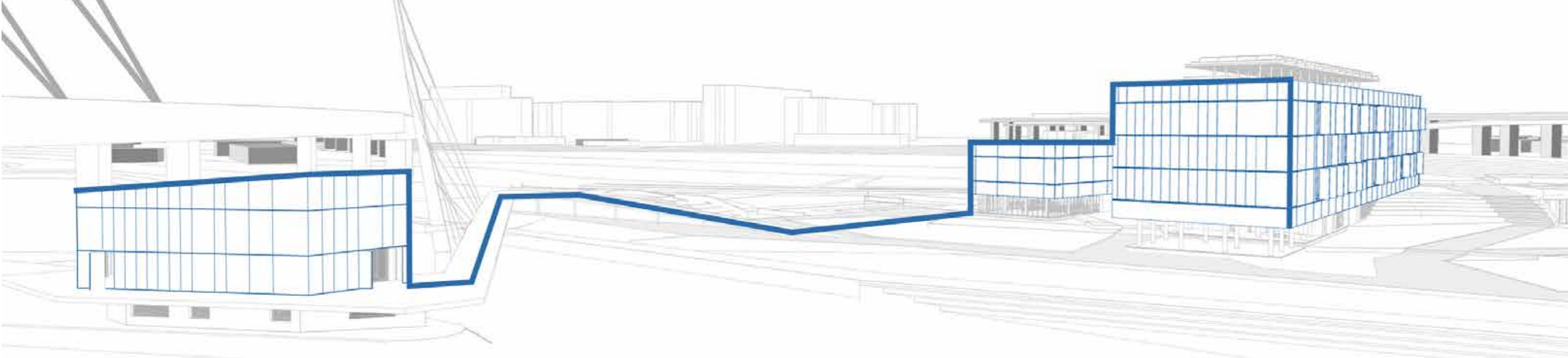
MASTER PLAN

PLAN LEGEND

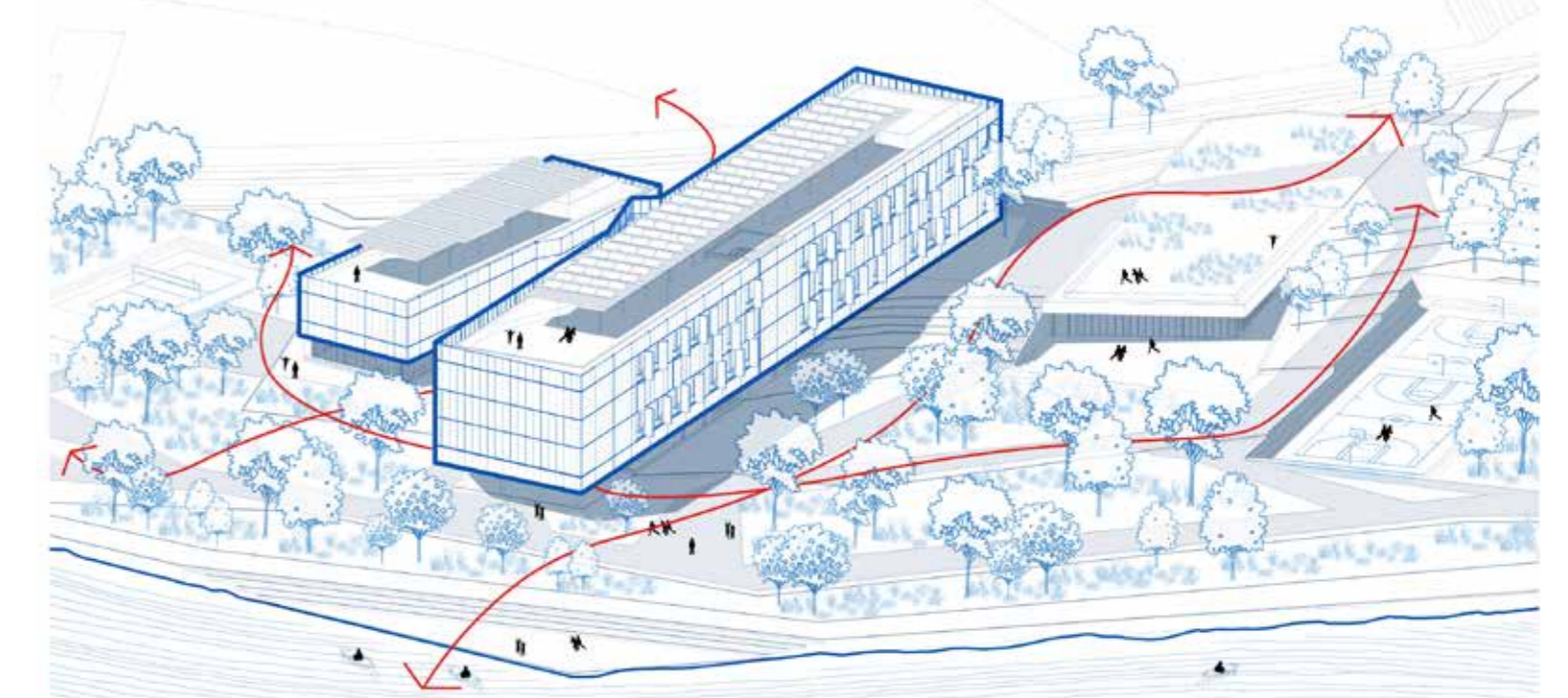
- 1. ACCOMMODATION 1875.00mp
- 2. GYM 702.30mp
- 3. CAFETERIA (underground area) 2120.00mp
- 3.1 PARKING AREA 693mp
- 3.2 KITCHEN 495mp
- 3.3 DINNING AREA 535mp
- 3.4 TECHNICAL SPACE 69mp
- 4. COFFEE SHOP (underground area) 100.00mp



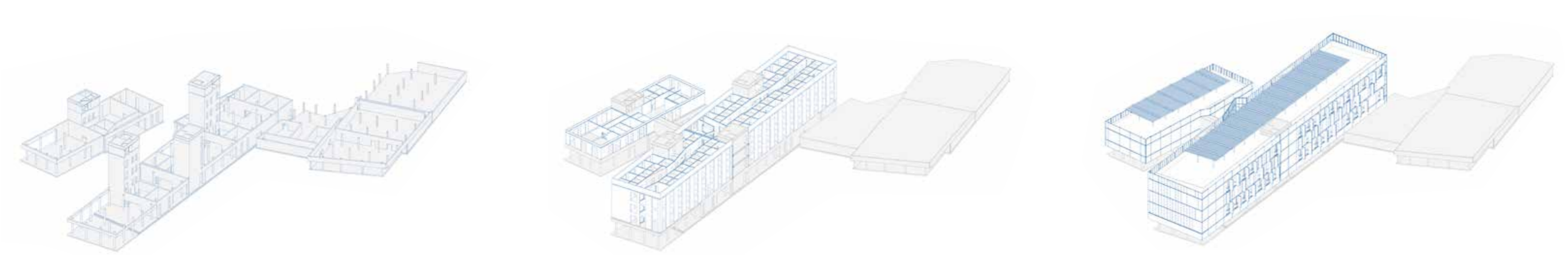
INTERCONNECTING VOLUMES



SPATIAL FLOW



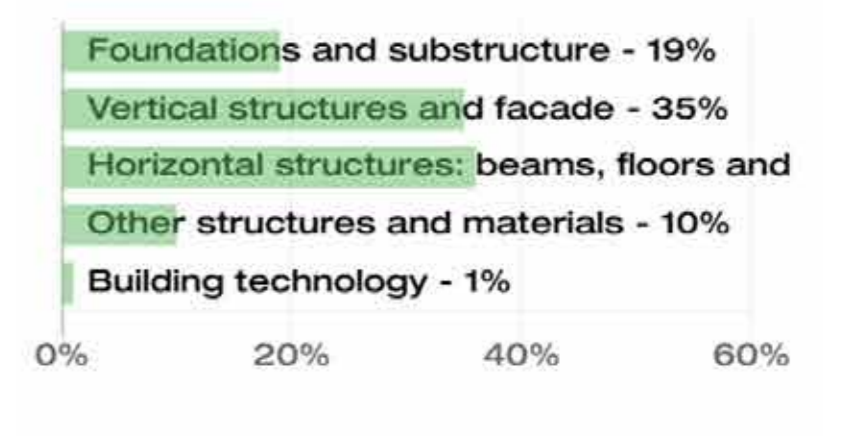
STRUCTURAL CONCEPT



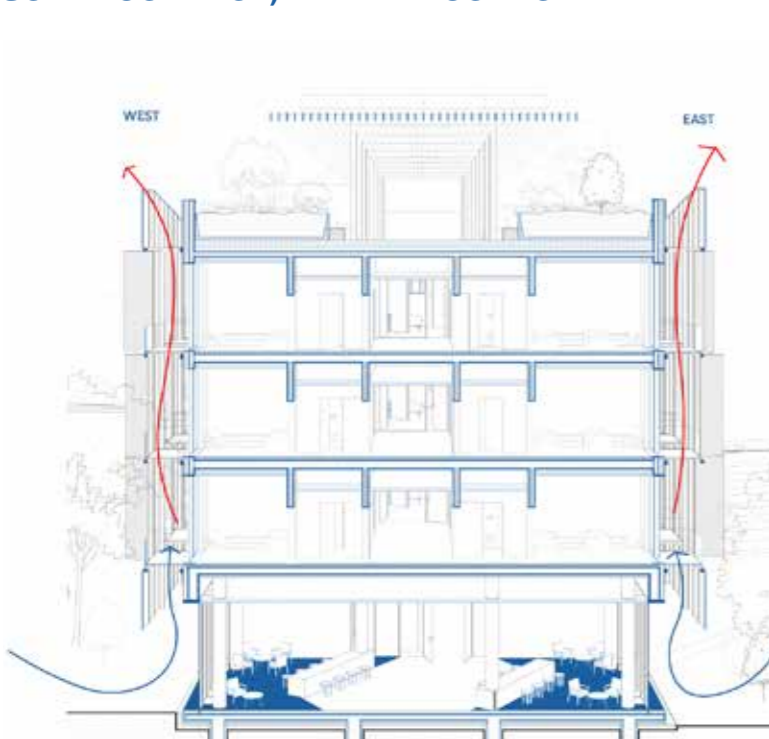
LCA CALCULATIONS

Life Cycle Stage Breakdown

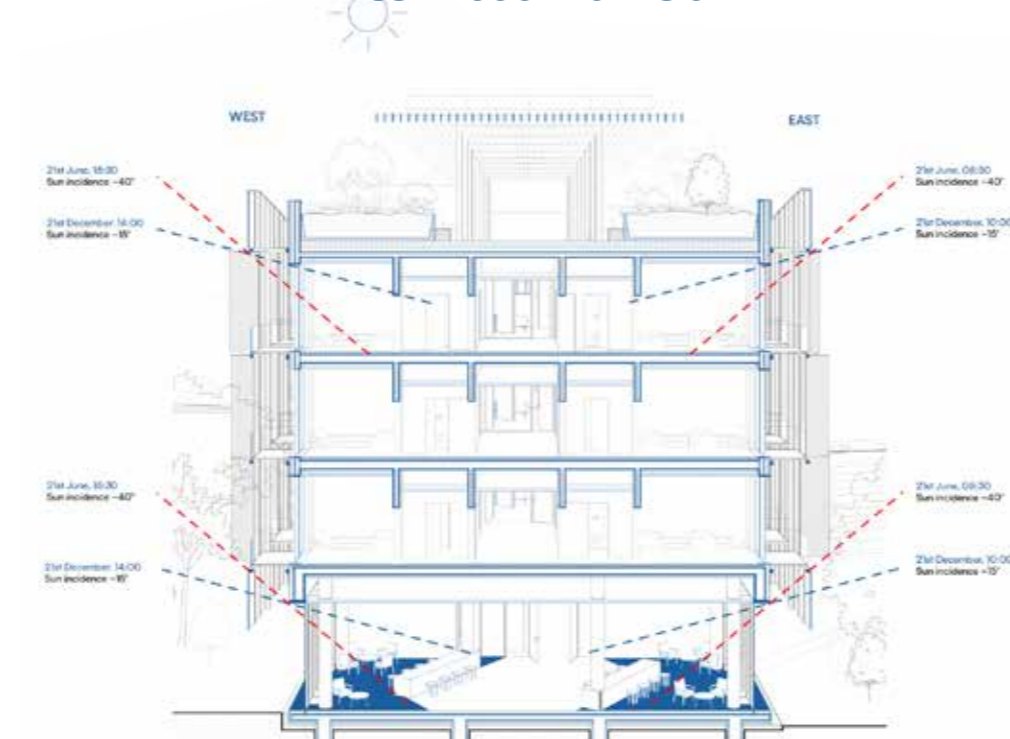
The majority of emissions, 80%, originate from material production (A1-A3). Maintenance and replacements (B4-B5) contribute 13%, while transport and waste account for the remaining 7%.



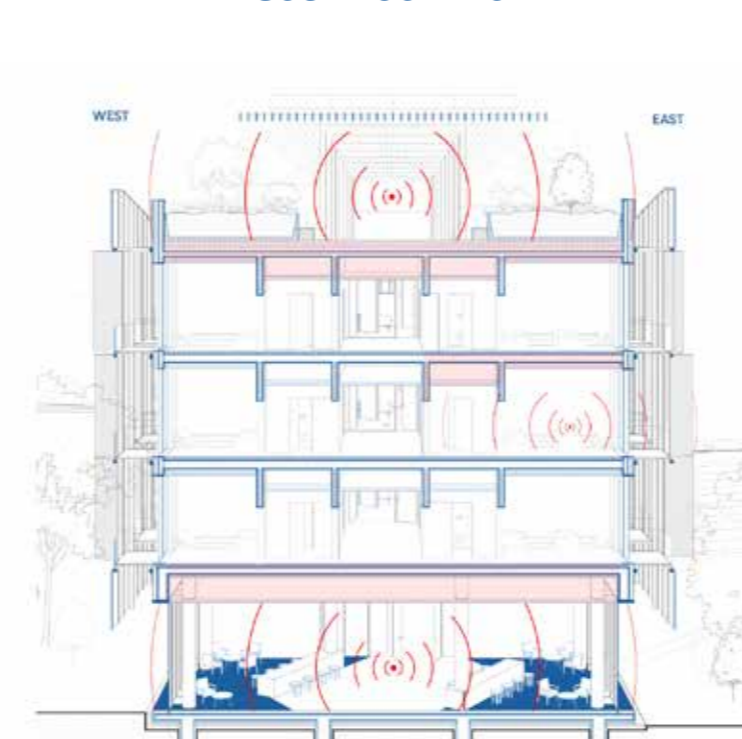
SOLAR CONTROL, THERMAL COMFORT



PASSIVE COOLING DESIGN



SOUND CONTROL



Structural Element Breakdown

The primary impact comes from vertical and horizontal structures (facades, beams, and floors), which together represent 70% of the total. Foundations account for 19%, with the rest attributed to other materials and building technology.



Total emissions: 168 Tonne CO2e
Emissions per m2: 279kg CO2e/m2
Annual carbon intensity: 7.26 CO2e/m2/year
Social cost of carbon: 8.365

