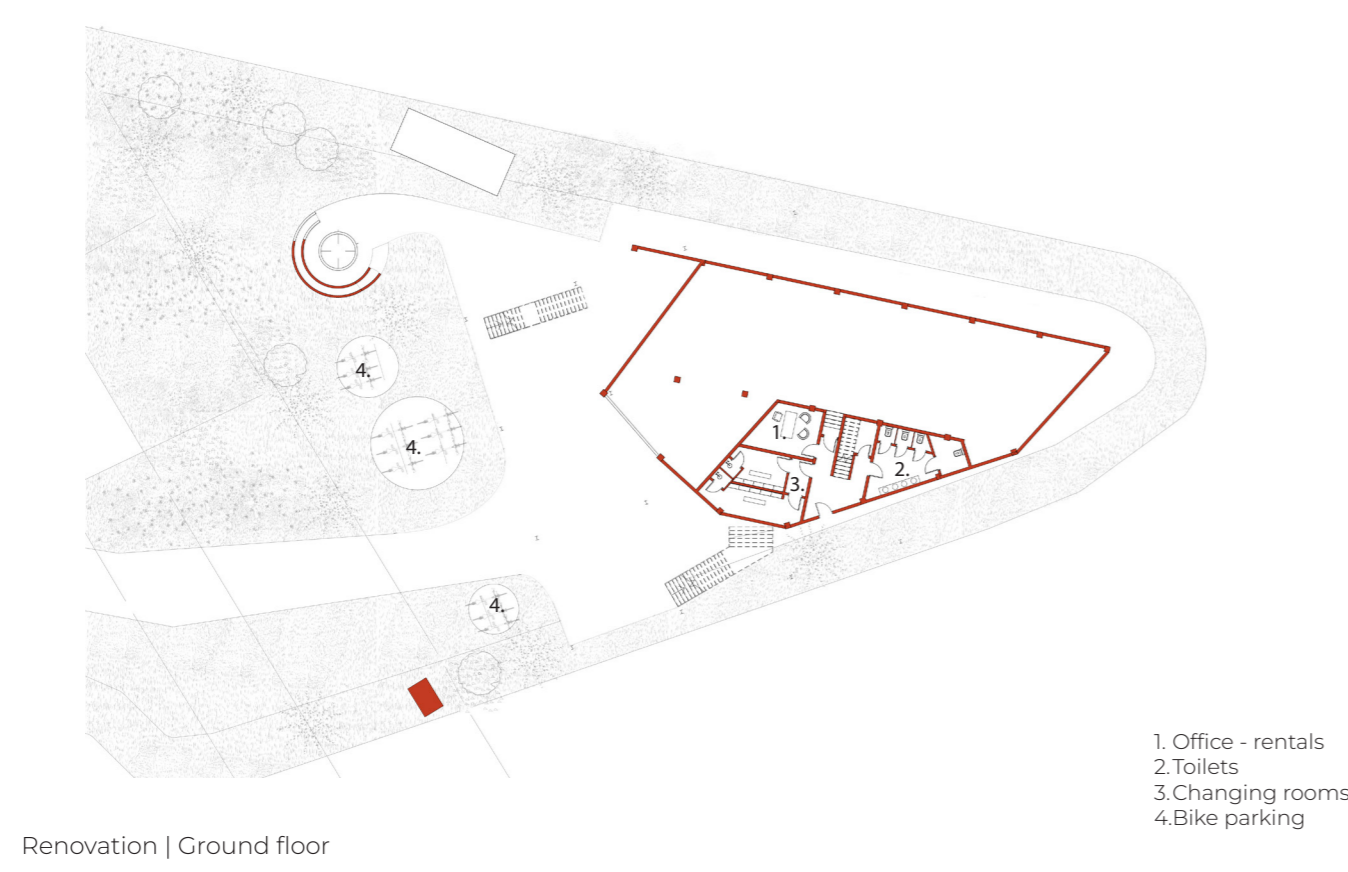


Renovation



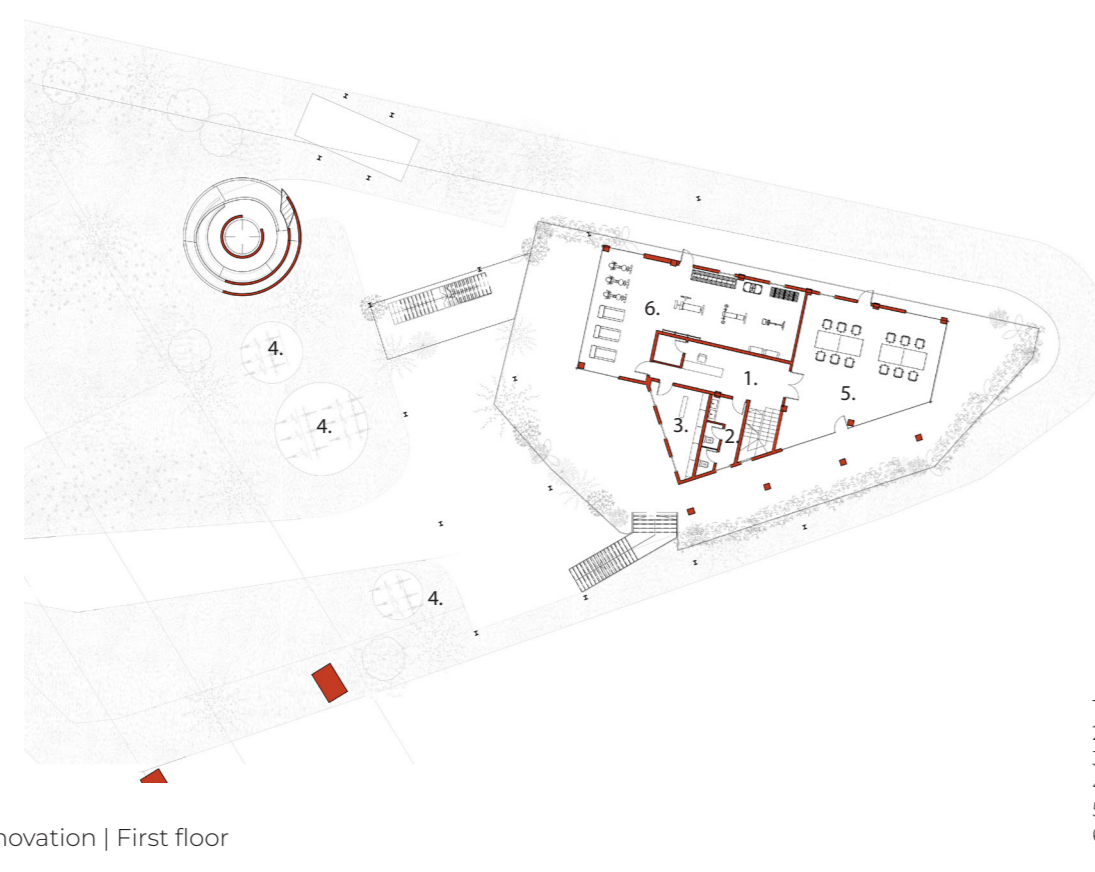
The renovation

The renovation strategy is based on minimal intervention, preserving the existing structure while upgrading the building envelope to improve environmental performance. On the exterior, the project extends the same lightweight scaffold system used in the new development, enhancing connectivity and allowing for the future integration of lifts to support accessibility and mobility. Conceived as a temporary green double skin, the scaffold respects the protected corridor while adding a new layer of circulation, linking the ground floor directly to the second level. A bridge completes this strategy, connecting the renovated building with the new intervention and reinforcing the continuity of the overall complex.



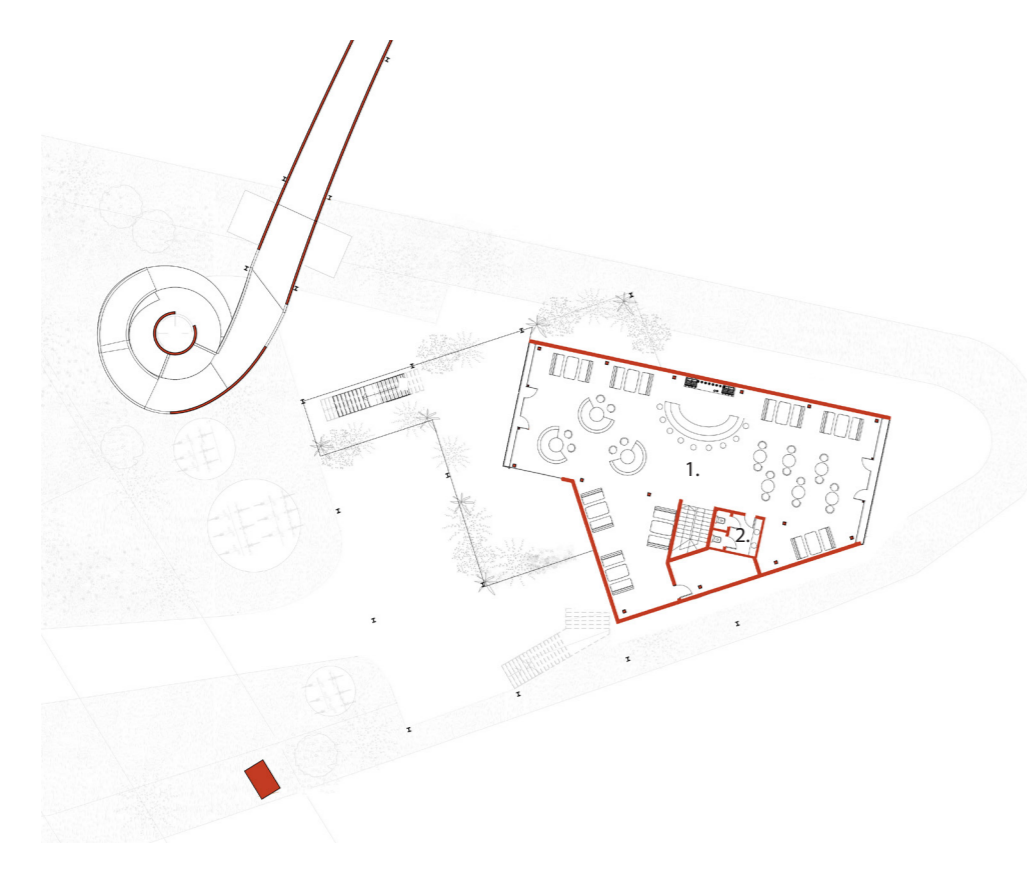
Renovation | Ground floor

- 1. Office - rentals
- 2. Toilets
- 3. Changing rooms
- 4. Bike parking



Renovation | First floor

- 1. Lobby
- 2. Changing rooms
- 3. Bike parking
- 4. Storage room
- 5. Gym



Renovation | Second floor

- 1. Coffee shop
- 2. Toilets

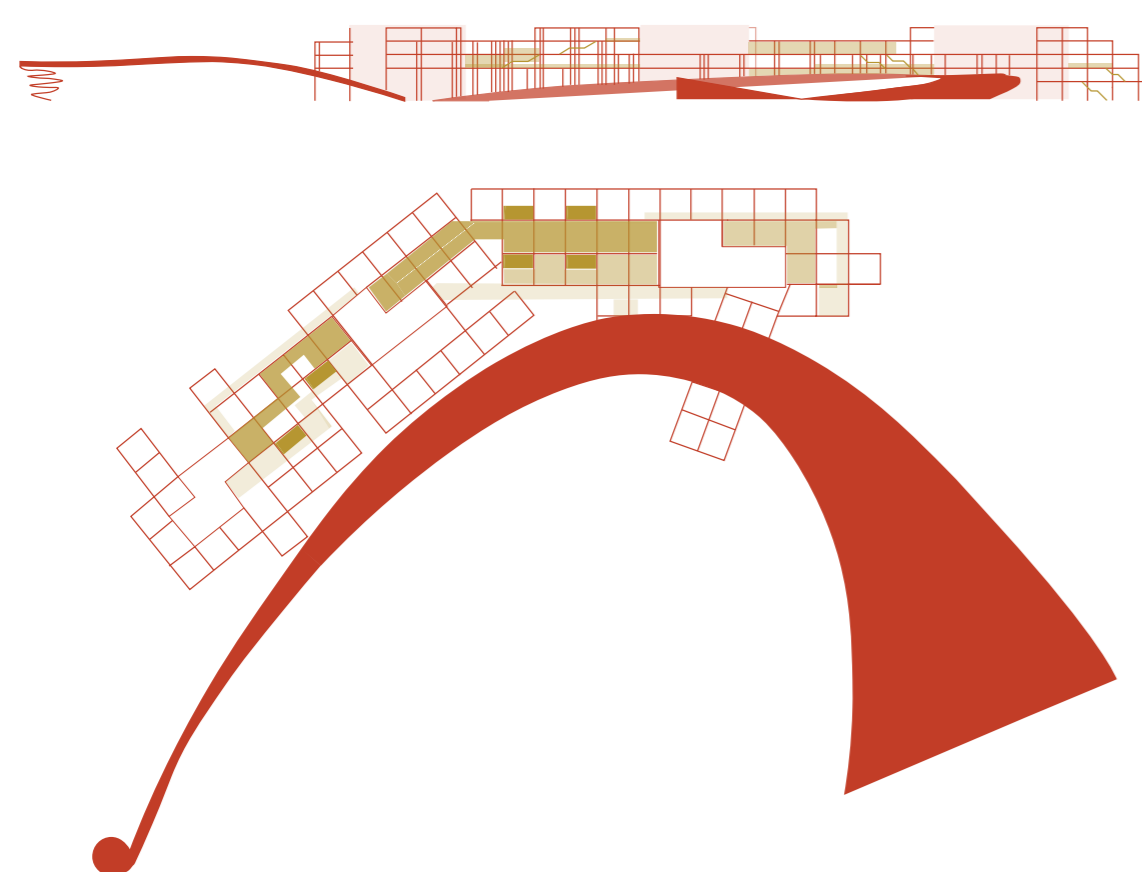


Relationship between the new construction and the renovation



Renovation

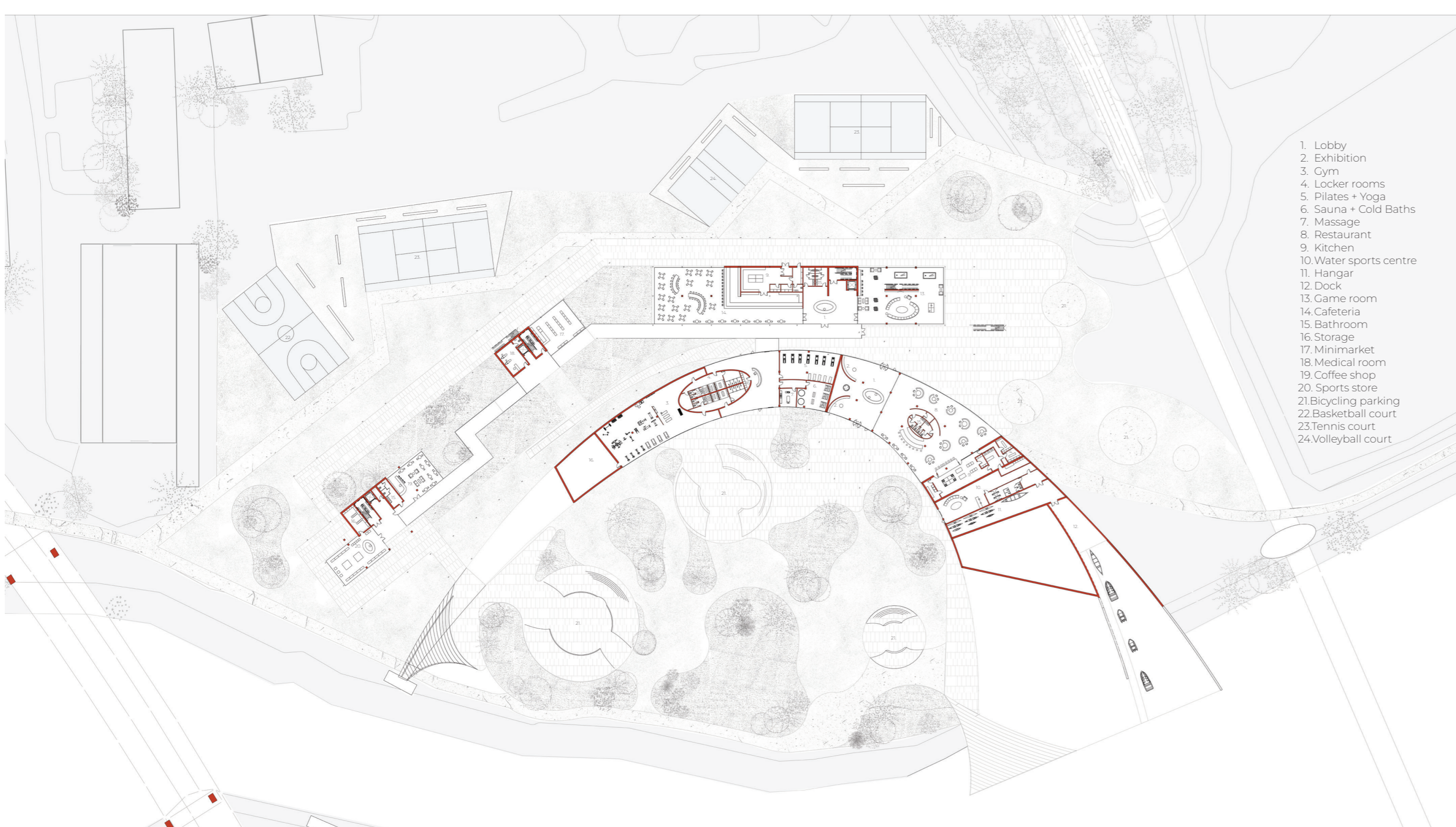
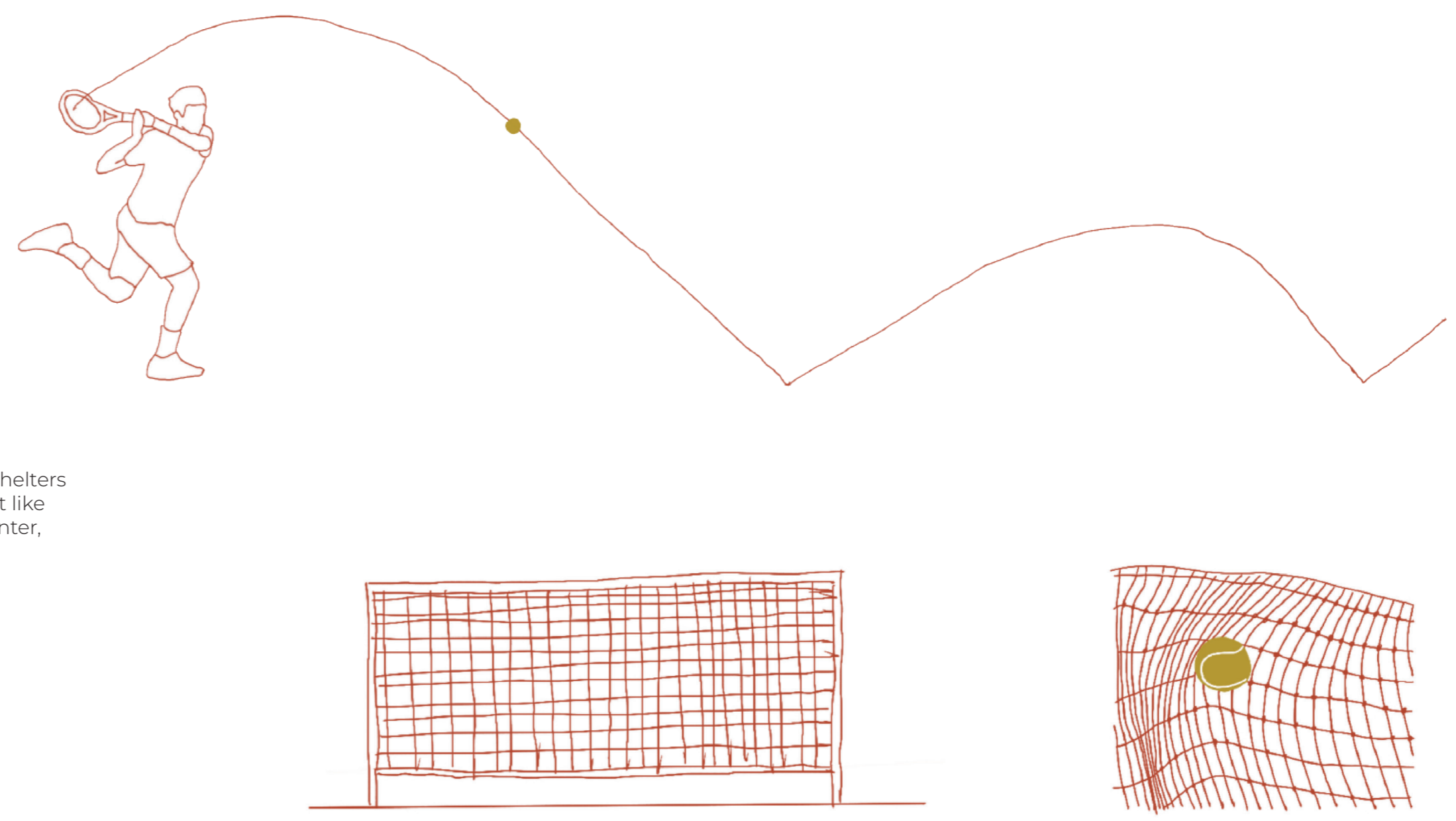
New Construction



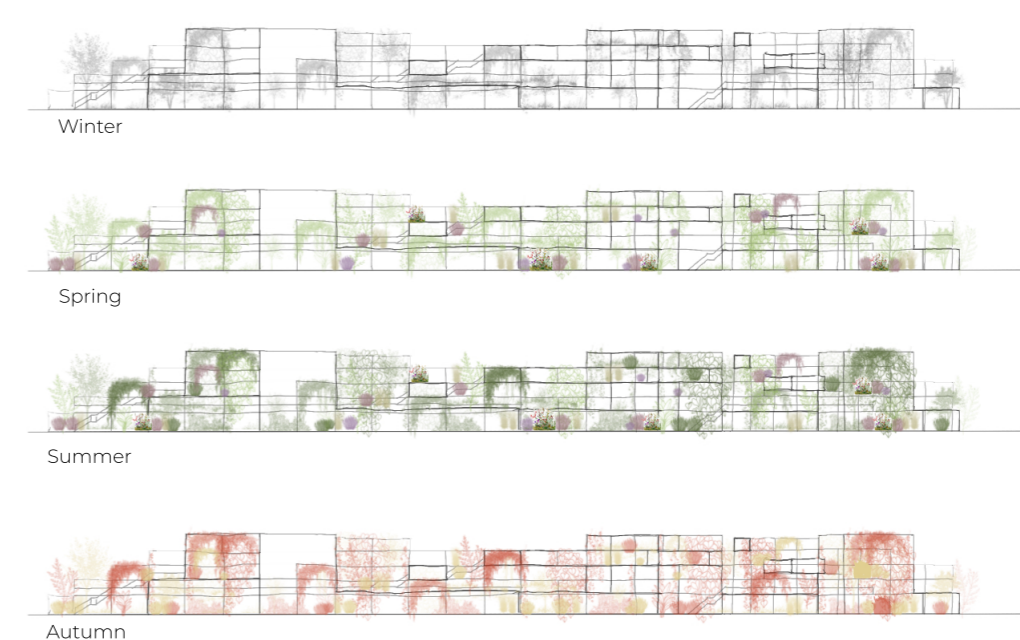
Order and break point

The project unfolds between order and motion. The grid shelters everyday living, while a flowing public form cuts through it like the trajectory of a tennis ball, creating moments of encounter, activity and exchange.

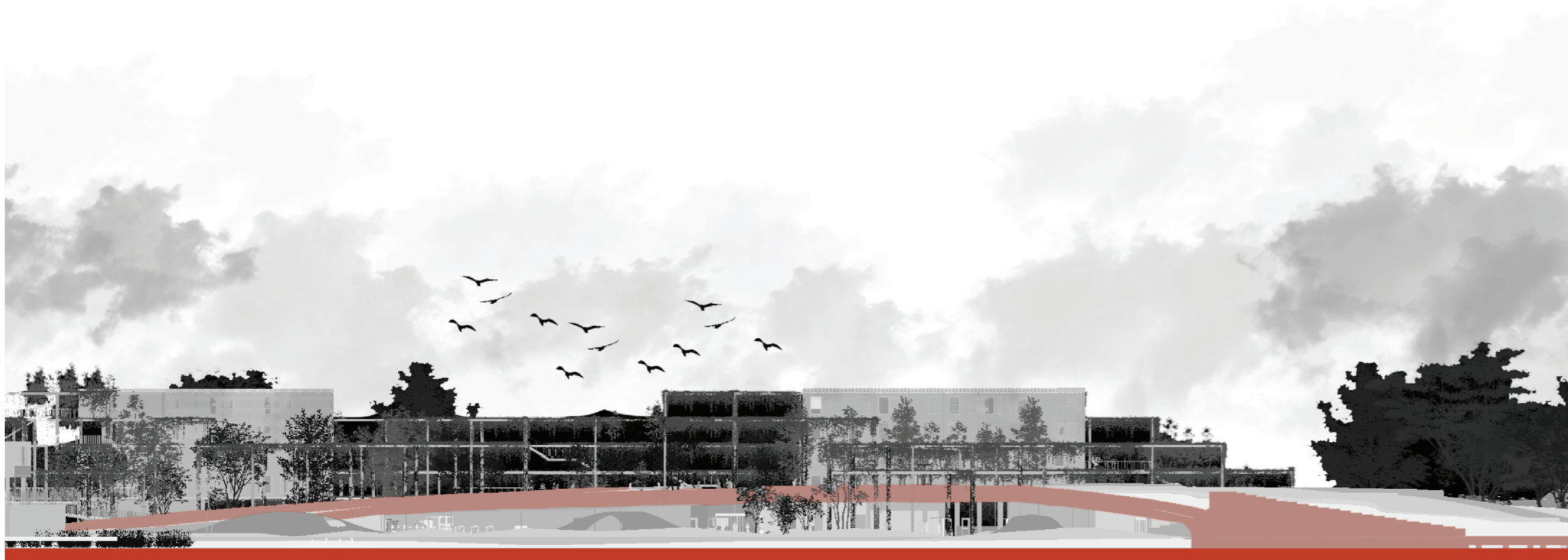
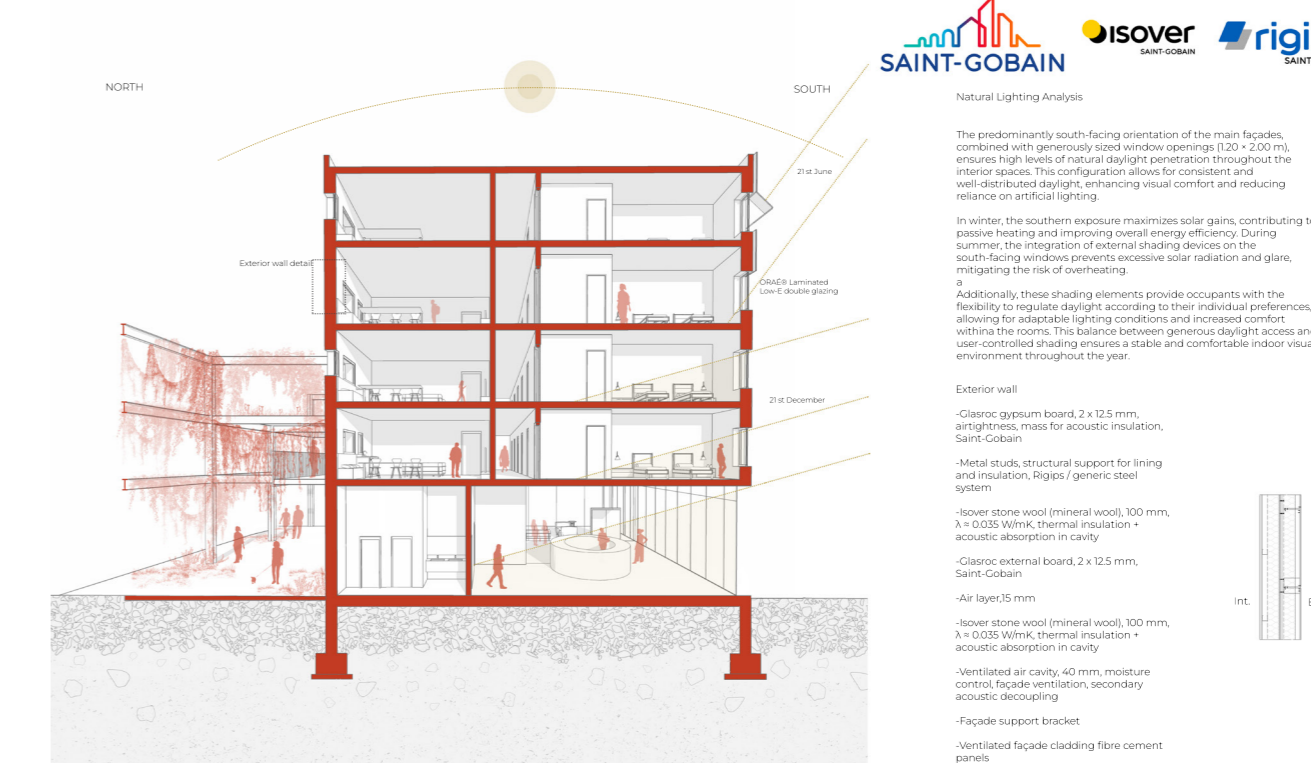
- Break point
- Living grid



- 1. Lobby
- 2. Exhibition
- 3. Gym
- 4. Locker rooms
- 5. Fitness yoga
- 6. Sauna + Cold Baths
- 7. Massage
- 8. Restaurant
- 9. Kitchen
- 10. Water sports centre
- 11. Storage
- 12. Locker
- 13. Carve room
- 14. Cafeteria
- 15. Bathroom
- 16. Storage
- 17. Mini-market
- 18. Medical room
- 19. Coffee shop
- 20. Sports store
- 21. Jogging pathway
- 22. Basketball court
- 23. Tennis court
- 24. Volleyball court



Across the seasons, the framework grids from outline to atmosphere, as vegetation turns structure into a living landscape of shade, color and encounter.



New Construction: Southern Elevation



New Construction: Northern Elevation

