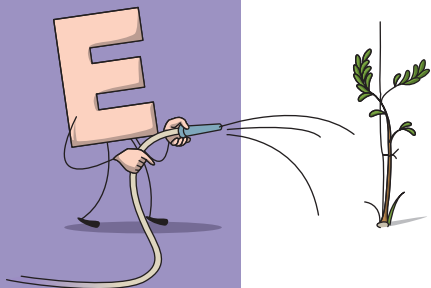


**Carta  
&  
Angajamentele**

**Charter  
&  
Commitments**



# Carta & Angajamentele Charter & Commitments



## Cuprins

### CARTA EHS

#### OBLIGATIILE SOCIETATILOR DIN GRUP

- > Definirea unei politici
- > Evaluarea riscurilor
- > Sistemele de management
- > Formarea, informarea si comunicarea
- > Situatiile de urgenta
- > Subcontractare
- > Produse noi si proiecte de investitii
- > Controlul si masurarea eficacitatii

#### EXTRAS DIN PRINCIPIILE DE CONDUITA SI DE ACTIUNE IN GRUP

#### POLITICA EHS A GRUPULUI

## CONTENTS

### EHS CHARTER

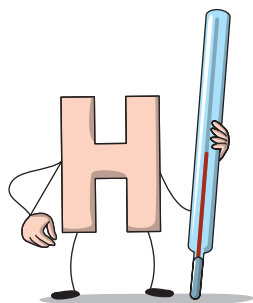
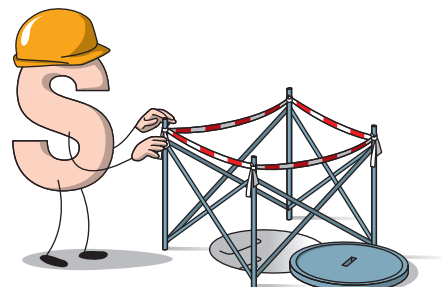
#### OBLIGATIONS OF THE GROUP'S COMPANIES

- > Definition of a policy
- > Risk assessment
- > Management system
- > Training, information and communication
- > Emergency situations
- > Subcontracting
- > New products and investment projects
- > Controls and measures of effectiveness

#### EXTRACT FROM THE GENERAL PRINCIPLES OF CONDUCT AND ACTION IN THE GROUP

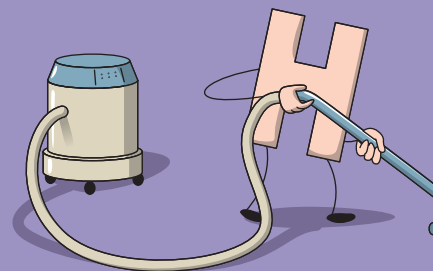
#### EHS POLICY OF THE GROUP

Acest document este un supliment al Principiilor de Conducita si de Actiune ale Grupului Saint-Gobain si care se refera la mediu, sanatate si siguranta. El contribuie la cresterea durabila care face parte din strategia Grupului intr-un mod progresiv si durabil. Fara a fi exhaustiv, el aminteste tuturor de sarcinile principale ale fiecaruia pentru implementarea principiilor si politicii EHS ale Grupului. Acest document se adreseaza tuturor responsabililor executivi, in special Plant Managerilor, care isi asuma, prin delegarea autoritatii, responsabilitatea politicii EHS. Pentru aprofundarea subiectului toate persoanele vizate se pot referi la "Referinte Mediu, Sanatate si Securitate Saint-Gobain" disponibile pe portalul intranet <http://portal.saint-gobain.com/wps/portal> domeniul Mediu, Sanatate IH, Siguranta



This document is a supplement to the General Principles of Conduct and Action of the Group and applies to the environment, health and safety matters. It contributes to sustainable growth which is part of the Group strategy in a progressive and reasonable way. Without attempting to be exhaustive, it reminds everyone of their main duties for the implementation of the Principles and EHS policy of the Group. This document applies to all the executives, in particular to the plant managers, who assume, by delegation of authority, the responsibility of the EHS policy. To go thoroughly into the subject, you can refer to the «Saint-Gobain Environment, Health and Safety Frame of Reference» available on the intranet portal: <http://portal.saint-gobain.com/wps/portal>, Environment, Health IH, Safety domain

# Carta Charter



**ZERO ACCIDENTE DE MUNCA,  
ZERO BOLI PROFESIONALE,  
ZERO DESEURI NERECUPERATE !**

**TOWARDS ZERO WORK-RELATED ACCIDENTS,  
TOWARDS ZERO OCCUPATIONAL ILLNESSES,  
TOWARDS ZERO NON-RECOVERED WASTE !**



In fiecare zi, fiecare persoana din Saint-Gobain se angajeaza activ sa atinga obiectivele ambitioase ale politicii EHS ale Grouplui Saint-Gobain prin implementarea urmatoarelor principii :

- > Respectarea legalitatii si a celor mai bune practici de management ;
- > Prevenirea tuturor formelor de risc ;
- > Prioritati si obiective masurabile, bazate pe rezultatele cele mai performante ale firmelor din Grup
- > Aplicarea politicii EHS tuturor angajatilor firmelor subcontractante care lucreaza in locatiile Grupului
- > Dialogul continuu, responsabil si deschis cu partenerii nostri (autoritati publice, clienti, furnizori, etc.)

Every day, everyone at Saint-Gobain is actively committed to pursuing the objectives of the company's EHS policy through the implementation of the following principles:

- > Respect for the law and for best management practices ;
- > Managing all forms of risk;
- > Measurable priorities and performances based upon particularly effective performance standards;
- > Application of the EHS policy to outside contractors who are working at compagny locations;
- > Continuous, responsible and open dialog with our partners (public authorities, customers and suppliers, etc.).



# 1

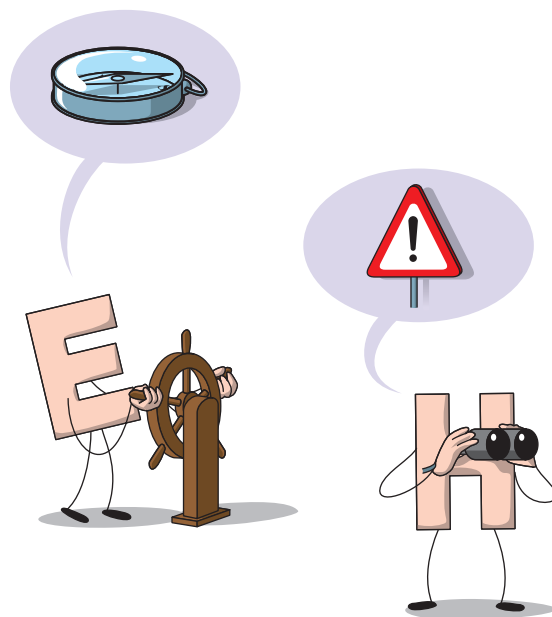
## DEFINIREA UNEI POLITICI

Pe baza politicii Grupului, în funcție de caracteristicile mediului înconjurător și a analizei riscurilor și în conformitate cu cerințele legale care sunt aplicabile, Conducerea firmei definește în scris politica, obiectivele și angajamentele în materie de mediu înconjurător, sănătate și siguranță.

## DEFINITION OF A POLICY

A written declaration is drawn up by Management, stating their policy, objectives and commitment regarding the overall EHS performance.

It is based on the Group policy and is in accordance with applicable legal requirements, with the environmental characteristics and with the risk assessment of the site.



# EVALUAREA RISCURILOR

Conducera firmei evalueaza riscurile operationale in materie de siguranta si de sanatate a personalului, furnizorilor si a contractorilor precum si riscurile mediului inconjurator.

Pentru a face acest lucru, firma :

- > cuantifica pericolele si potentialele vatamari cauzate de aceste operatiuni,
- > evalueaza calitativ si cantitativ expunerile sau posibilele cazuri
- > ierarhizeaza riscurile utilizand metoda obiectiva
- > decide un plan de actiune care include obiective, termene si mijloace de control.



## RISK ASSESSMENT

The site assesses the health and safety risks concerning staff, service providers and subcontractors, and the environmental risks. To this end, the plant:

- > draws up the inventory of potential hazards and nuisances caused by these operations,
- > makes a qualitative and quantitative assessment of exposures probabilities,
- > prioritizes risks using an objective method,
- > decides action plan including objectives, time limits and means of control.



# 3

## SISTEMUL DE MANAGEMENT

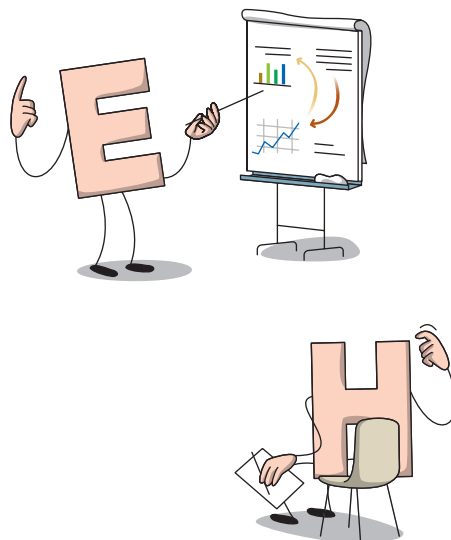
Conducerea firmei stabileste un sistem de management EHS pentru atingerea obiectivelor politicii definite. Aceasta desemneaza pe unul (sau mai multi) din membrii sai pentru a se asigura ca acest sistem de management este pus in practica in conformitate cu cerintele pe care si le-a fixat si este conform cu procesul de imbunatatire continua.

Conducerea firmei pune la dispozitie resursele (umane si financiare) necesare unei bune functionari ale sistemului de management EHS.

## MANAGEMENT SYSTEM

The site draws up an EHS management programme to achieve previously defined objectives. The site appoints one (or several) member(s) of Management to ensure that the implementation of the EHS management system is in accordance with requirements and that it is in line with a continuous improvement process.

The site Management provides the human and financial resources required for the proper operation of the EHS management system.





# FORMAREA, INFORMAREA SI COMUNICAREA

Conducerea firmei informeaza personalul asupra pericolelor si riscurilor legate de activitatea pe care o exercita si precizeaza mijloacele de prevenire si de protectie implementate si puse la dispozitie. Ea identifica nevoile pentru instruirea EHS pentru tot personalul tinand cont de diferitele nivele de responsabilitate si de competenta personalului.

Conducerea firmei beneficiaza de o instruire asupra politicii EHS in prealabil. Comunicarea in cadrul firmei este organizata astfel incat sa asigure raspandirea si dezvoltarea spiritului de echipa si a culturii EHS.



## TRAINING , INFORMATION AND COMMUNICATION



The site informs staff about the risks and hazards linked to their activities and specifies means of prevention and protection implemented and provided for. The site identifies EHS training needs for the whole staff. Staff training takes into account the different levels of responsibility, competency and understanding. Site management has been previously trained in EHS policy. Communication within the site is organized to spread and develop teamwork spirit and EHS culture.

# 5

## SITUATIILE DE URGENTA

Situatiile accidentale sau cazurile de urgenta potentiale sunt identificate. Consecintele acestora in termeni de riscuri EHS sunt evaluate pentru personal, populatia in cauza si mediul inconjurator.

Planurile de urgenta sunt implementate, transmise, explicate si innoite. Conducerea firmei este instruita in comunicare in situatia de administrare a crizei. In cazul unui incident sau accident, comunicarea este asigurata celor implicati in concordanta cu planul de comunicare de urgenta stabilit in prealabil

## EMERGENCY SITUATIONS

Potential accident situation or emergency cases are duly considered. Their consequences in terms of EHS risks are assessed regarding staff, concerned population and environment. Emergency plans are set up, circulated, explained and updated. The Management is trained for crisis communication. In the event of accidents, communication is set up with concerned parties in accordance with the established emergency communication plan.

